



TEN is a collection of multipurpose chairs characterised by an essential, neutral design. The collection comprises chairs in four-legged and rod sled base versions. All versions are stackable and optionally can be fitted with a fold-away writing tablet. The seat and backrest can be upholstered in any leather or fabric from the INCLASS swatch cards or in fabrics supplied or specified by the customer. The metallic structures are finished in thermoset polyester powder coating in any of the colours of the INCLASS swatch cards or in chrome.

## DESIGNER: INCLASS Studio



The INCLASS design studio started its activity in 2005 with the aim of embedding and driving design in different areas of the company. Today the studio is made up of a cross-functional team which incorporates product designers, graphic designers, engineers and prototype technicians. Since then it has undertaken the overall design of numerous products and has developed the proposals of top external designers who usually work with our firm. The studio strives to ensure that INCLASS designs have a contemporary look, that at the same time are balanced, pure, elegant and timeless with a view to introducing collections that are always innovative, attractive and modern.

## UPHOLSTERED SEATS & BACKRESTS

The inner seats and backrests are made of bentwood covered with high density and resilience polyurethane foam.

**Upholstery:** Available in any of the leathers or fabrics of the INCLASS swatch cards and also with fabrics supplied or specified by the customer.

## BASES

### Four legged chair:

The frame is made with 16mm steel tube with 2mm thickness.

**Finishes:** Available in thermoset polyester powder coating in any of the colours of the INCLASS swatch cards or in chrome.

**Glides:** Standard plastic glides for floor protection are included. Plastic glides with felt surface, recommended for hard and delicate surfaces, are available upon request.

**Stackability:** this version is stackable

### Chair with rod sled base:



The frame is made with 12mm solid steel rod.

**Finishes:** Available in thermoset polyester powder coating in any of the colours of the INCLASS swatch cards or in chrome.

**Glides:** Standard plastic glides for floor protection are included. Plastic glides with felt surface, recommended for hard and delicate surfaces, are available upon request.

**Stackability:** This version is stackable



	Height	Height seat	Width	Seat width	Depth	Seat depth	Weight (kg)	Fabric (m)
 TEN0010	78,5	47	57	46,5	56	43,5	8	1
 TEN0020	78,5	47	51	46,5	54	43,5	6	1

## METALLIC BASES



Black



White



Aluminum



Chrome



Dark green  
RAL 6003



Mustard  
RAL 1032



Vison  
RAL 1019



Brown  
RAL 7006



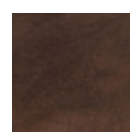
Grey  
RAL 7036



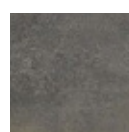
Anthracite  
RAL 7043



Red  
RAL 3011



Rust brown



Rust grey

## CERTIFICATION & STANDARDS

- AIDIMA Quality Control Label

- The quality management system of INCLASS is certified in accordance with ISO 9001 in all the design, manufacturing and sales procedures of its products.

- INCLASS production processes are certified according to environmental ISO 14001 quality standards and are carried out through the reduction of waste and energy consumption in order to minimise any impact on the environment.



---

## WARRANTY

INCLASS MOBLES S.L. guarantees the products of the collection UNNIA against any manufacturing and materials defect up to a period of 5 years from the date of the invoice. All damages caused by misuse, accident as well as those having their cause on the lack of proper maintenance are excluded from this warranty. Natural attrition of fabric and upholstery foam is also excluded from this warranty. The customer must prove the date of purchase of the article with the invoice.

INCLASS replace or repair nonconforming products or components taking over the costs without any other liability.