



TAO is a collection of multipurpose stools with a lightweight, essential and neutral design. The collection is made up of stools with either a wooden or upholstered seat. The wooden seats are available in lacquered colours or in beech, oak and walnut veneers. The upholstered seats are manufactured in all the leathers and fabrics of the INCLASS swatch cards or fabric supplied or specified by the customer. The metallic structures are manufactured in two heights and can be finished in chrome or polyester paint in all colours from the INCLASS colour samples.

## DESIGNER: INCLASS Studio



The INCLASS design studio started its activity in 2005 with the aim of embedding and driving design in different areas of the company. Today the studio is made up of a cross-functional team which incorporates product designers, graphic designers, engineers and prototype technicians. Since then it has undertaken the overall design of numerous products and has developed the proposals of top external designers who usually work with our firm. The studio strives to ensure that INCLASS designs have a contemporary look, that at the same time are balanced, pure, elegant and timeless with a view to introducing collections that are always innovative, attractive and modern.

## WOODEN SEATS

The wooden seats have a concave shape and are made of bentwood. They are available in different veneers and finishes.

### Lacquered:

Available in any of the lacquer colours of the INCLASS swatch cards.



Black



White



Dark green  
RAL 6003



Mustard  
RAL 1032



Vison  
RAL 1019



Brown  
RAL 7006



Grey  
RAL 7036



Anthracite  
RAL 7043



Red  
RAL 3011

### Beech veneer:

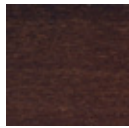
Finished with acrylic varnishing in all of the beech veneer stains of the INCLASS sample cards.



Natural beech



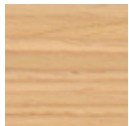
Walnut beech



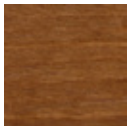
Wenge beech

### Oak veneer:

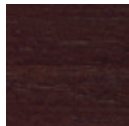
Finished with acrylic varnishing in all of the oak veneer stains of the INCLASS sample cards.



Natural oak



Walnut oak



Wenge oak



## UPHOLSTERED SEATS

The inner seats are made of bentwood covered with high density and resilience polyurethane foam.

**Upholstery:** Available in any of the leathers or fabrics of the INCLASS swatch cards and also with fabrics supplied or specified by the customer. The upholstery is available in four patterns: plain, with horizontal seams, with cross seams or diamond shaped seams.



## STRUCTURES


The frame is made of 12mm solid steel rod.

**Finishes:** Available in thermoset polyester powder coating in any of the colours of the INCLASS swatch cards or in chrome.

**Glides:** Standard plastic glides for floor protection are included. Plastic glides with felt surface, recommended for hard and delicate surfaces, are available upon request.

The stools are available in two heights 75cm and 65cm.


### Stool with wooden seat

|   | Height | Seat height | Width | Seat width | Depth | Seat depth | Weight (kg) | Fabric (m) |
|---|--------|-------------|-------|------------|-------|------------|-------------|------------|
|  | 77     | 75          | 50    | 42         | 42    | 30         | 6,3         | –          |
| TAO0010   |        |             |       |            |       |            |             |            |



TAO0111

### Stool with plain upholstered

|   | Height | Seat height | Width | Seat width | Depth | Seat depth | Weight (kg) | Fabric (m) |
|---|--------|-------------|-------|------------|-------|------------|-------------|------------|
|  | 77     | 75          | 50    | 42         | 42    | 30         | 6,6         | 0,5        |
| TAO0020   |        |             |       |            |       |            |             |            |



TAO0120

## METALLIC BASES



Black



White



Aluminium



Chrome



Dark green  
RAL 6003



Mustard  
RAL 1032



Vison  
RAL 1019



Brown  
RAL 7006



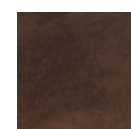
Grey  
RAL 7036



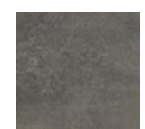
Anthracite  
RAL 7043



Red  
RAL 3011



Rust brown



Rust grey

## CERTIFICATIONS & STANDARDS

- AIDIMA Quality Control Label



- The quality management system of INCLASS is certified in accordance with ISO 9001:2008 in all the design, manufacturing and sales procedures of its products.

- INCLASS production processes are certified according to environmental ISO 14001:2004 quality standards and are carried out through the reduction of waste and energy consumption in order to minimise any impact on the environment.

---

## WARRANTY

INCLASS MOBLES S.L. guarantees the products of the collection TAO against any manufacturing and materials defect up to a period of 5 years from the date of the invoice. All damages caused by misuse, accident as well as those having their cause on the lack of proper maintenance are excluded from this warranty. Natural attrition of fabric and upholstery foam is also excluded from this warranty. The customer must prove the date of purchase of the article with the invoice.

INCLASS replace or repair nonconforming products or components taking over the costs without any other liability.