



New collections iSaloni 2017



INCLASS

MARCUS

design – Christophe Pillet



MARCUS

Designed by **Christophe Pillet**, **MARCUS** is a collection of modern sofas for lounge, working or residential spaces. The collection stands out for its comfort, timeless, design and smooth volumes. The original aluminium legs give the ensemble a light and slender look, creating an almost aerial feeling.

The collection comprises sofas in several sizes, available in all the fabrics and leathers from the INCLASS sample cards or in fabrics specified by the customer. The aluminium legs are lacquered in all the colours of the INCLASS sample card. The collection is completed with cushions in several sizes.

The wide customising possibilities allow the sofas to adapt to both public-use and corporate or private settings.

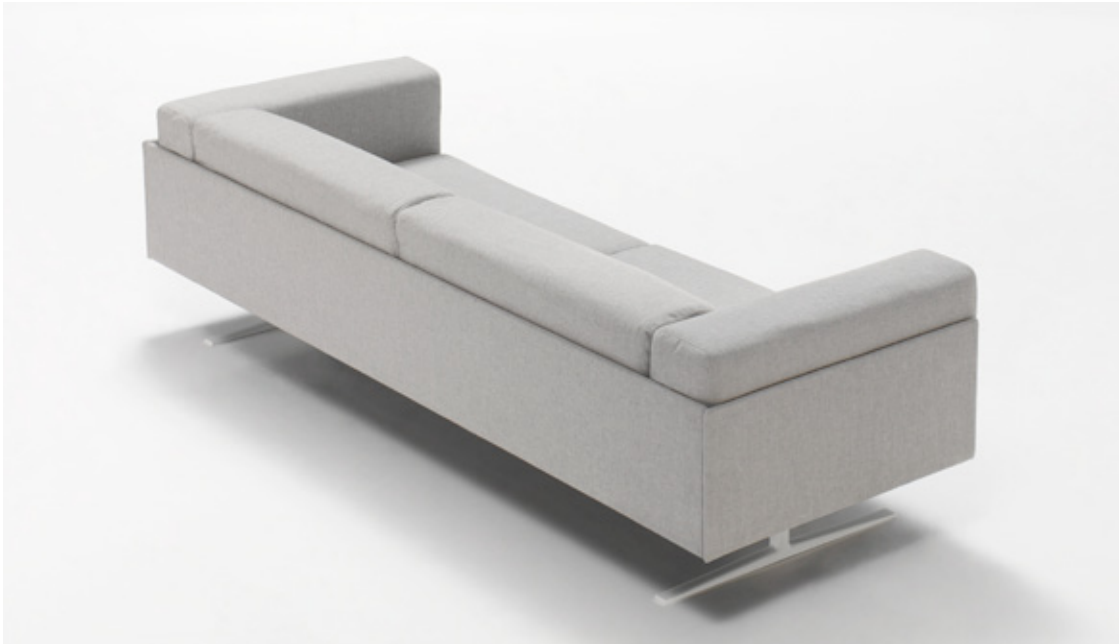


INCLASS



MARCUS

Christophe Pillet says: *“Marcus sofa is a contract piece of furniture in its functionality but designed with a domestic attention, allowing people to place it at home”*



INCLASS

NIM
design – Yonoh



NIM

Designed by the **Yonoh Estudio**, the **NIM** collection was born of the search for versatility of use. In formal terms, the collection stands out for its sinuous, friendly and inviting design. The use of wood and the original upholstery bring warmth to the collection.

The shells are available in oak veneer, lacquered or upholstered versions. The chair is produced with three original types of bases: four-legged oak wood, four-legged tube or rod sled bases. A bench with aluminium feet is also available. The shells and metallic bases are available in all the fabrics, colours and finishes of the INCLASS sample cards.

The extensive customisation possibilities allow the **NIM** chairs to inhabit any setting, whether public or private.



INCLASS

NIM wood
design — Yonoh



NIM WOOD



INCLASS

DUNAS stools

design – Christophe Pillet



DUNAS stools

Designed by **Christophe Pillet**, the new **DUNAS XS** stools complete the collection of the same name. The stools are available with two types of bases, a fixed one with four metallic legs and a swivel one with four oak wood legs, both of them available in heights of 75 and 65cm.

The bases are available in different finishes and the seats can be upholstered in all the fabrics and leathers from the INCLASS sample cards or in fabrics specified by the customer.



INCLASS

UNNIA stools

design – Simon Pengelly



UNNIA stools

Designed by **Simon Pengelly**, the new **UNNIA** and **UNNIA TAPIZ** stools complete the collections of the same name. They are available in heights of 75 and 65 cm and are produced in the same finishes as the rest of the products in the **UNNIA** collections.

Their high customisation possibilities and their essential design allow them to inhabit the most diverse spaces and contexts.



INCLASS